

Properties

Electric drive

Electric drive



Sky-frame sliding windows can be equipped with an invisible built-in electric drive in the top profile upon request.

The wings are moved using a special gear-belt drive integrated in the frame. The wings are automatically unlocked when opened and re-locked when closed.

The start-up and maintenance of the drive module are carried out directly through the frame profile. Maintenance openings with ugly covers in the ceiling are not required.

The powered sliding windows are generally positioned on the inner tracks.

Operation

The entire system and corners open up variably by pressing a button – providing unique operating convenience.

This is provided by a so called “dead man's switch”, which means that the wing moves only while the button is pressed. Controlling via a remote control with an active infrared monitoring system is also possible as an option. Depending on the pressure sequence, the wings can be opened and closed individually or all at once.

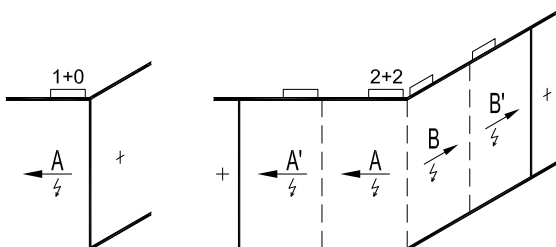
Manual operation is possible irrespective of the drive. The opening option is thereby guaranteed at any time, even at power failures.

Opening possibilities

In addition to the classic single wing opening, it is also possible to move several wings together.

Middle or corner openings can be made, also as telescopic corner opening with 2+2 wings.

A length of more than 9 metres can therefore be opened at once, with the push of only one button!



Sky Frame 2+3



Opening possibilities Electric drive

Condition

The powered sliding panels must not be located on the outer track.

